



Model: MSD-1106-02A

Min. 1%RH, Max. 60 °C, 1041L



Digital control panel

MSD-1106-02A has an outstanding performance for drying moisture sensitive components and PCBs as a result of a high performance drying unit and a heater. It is specially designed for moisture sensitive SMD packages to comply with IPC/JEDEC J-STD-033D.

Totech (Toyo Living) is the creator of world's first Automatic Drying System invented in 1973.

Super Dry cabinets use the highly-quality and highly reliable Toyo Living engine and has been sold over 700,000 units and used in over 10,000 companies around the world. We also supply various kinds of custom-build cabinet to best suit our client's need.

Features

- ❖ Advanced ultra-low humidity technology, effective thermal insulation to make the energy consumption the lowest.
- ❖ Humidity control: min. 1%RH
- ❖ Temperature control: Max. 60°C.
- ❖ ESD safe design: Cabinet is with ESD metal painted steel body, stainless steel shelves and ground wire, well comply with IEC 61340-5-1.
- ❖ Convenient Operation : Totech MSD cabinet is with digital control panel, can control the humidity precisely by adjusting $\pm 0.1\%$ RH, and temperature from room temperature to 60° C. Humidity, temperature and alarm functions are shown and can be adjusted by digital control panel. Key Lock function on the digital control panel prevents unintended changes of setting. Sensor calibration function is also available with digital panel.
- ❖ Maintenance free design: Totech dry cabinet works by dry units. An interlocked fan causes the air to circulate through the dry unit, while passing through the dry unit moisture in the air is absorbed by the zeolite desiccant. During periodic regenerating of the zeolite desiccant by heating, the absorbed humidity is evaporated and exhausted through the external shutters of the dry unit. The process is physical, and no extra maintenance at all.
- ❖ Lockable doors: Every door can be locked separately with a key.
- ❖ Alarm setting (Option): Humidity/door open alarm buzzer and humidity alarm light tower.

Applications

- Outstanding performance for floor life reset of components and drying of PCBs.
- To reset floor life for moisture sensitive devices with MSL 2-5a with 40~60°C+1%RH
- Mild temperatures (40-60° C) for floor life reset without flaws to SMDs that may caused by 125 °C baking, such as reel or tape materials.
- Can be used for both baking and long term storage for components.

Specifications

Humidity control	Min. 1%RH
Temperature control	Max 60°C
Sensor precision	$\pm 2\%$ RH, $\pm 1^\circ$ C
External dimensions	(W x H x D) 1200 x 1861 x 764 mm
Internal dimensions	(W x H x D) 1100 x 1510 x 550 mm
Weight	289 kg
Dehumidifying Capacity	1041 L
Shelves	5 pcs, adjustable (ESD safe steel shelves)
Loading capacity	100 kg/shelf
Structure	Double layer steel body with isolation
Cabinet color	Gray
Door	6 pcs, with handles, airtight magnetic sealers and tempered glass window
ESD grounding wire	1M Ω
Voltage	AC220 V, 50/60Hz
Castors	4pcs
Set and display	Digital panel

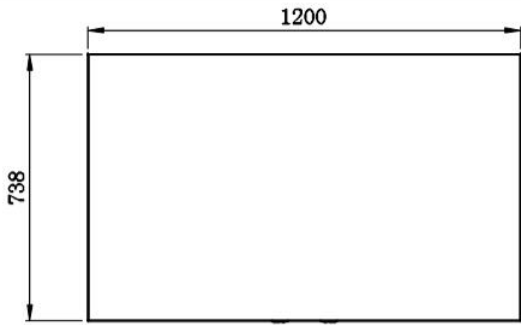
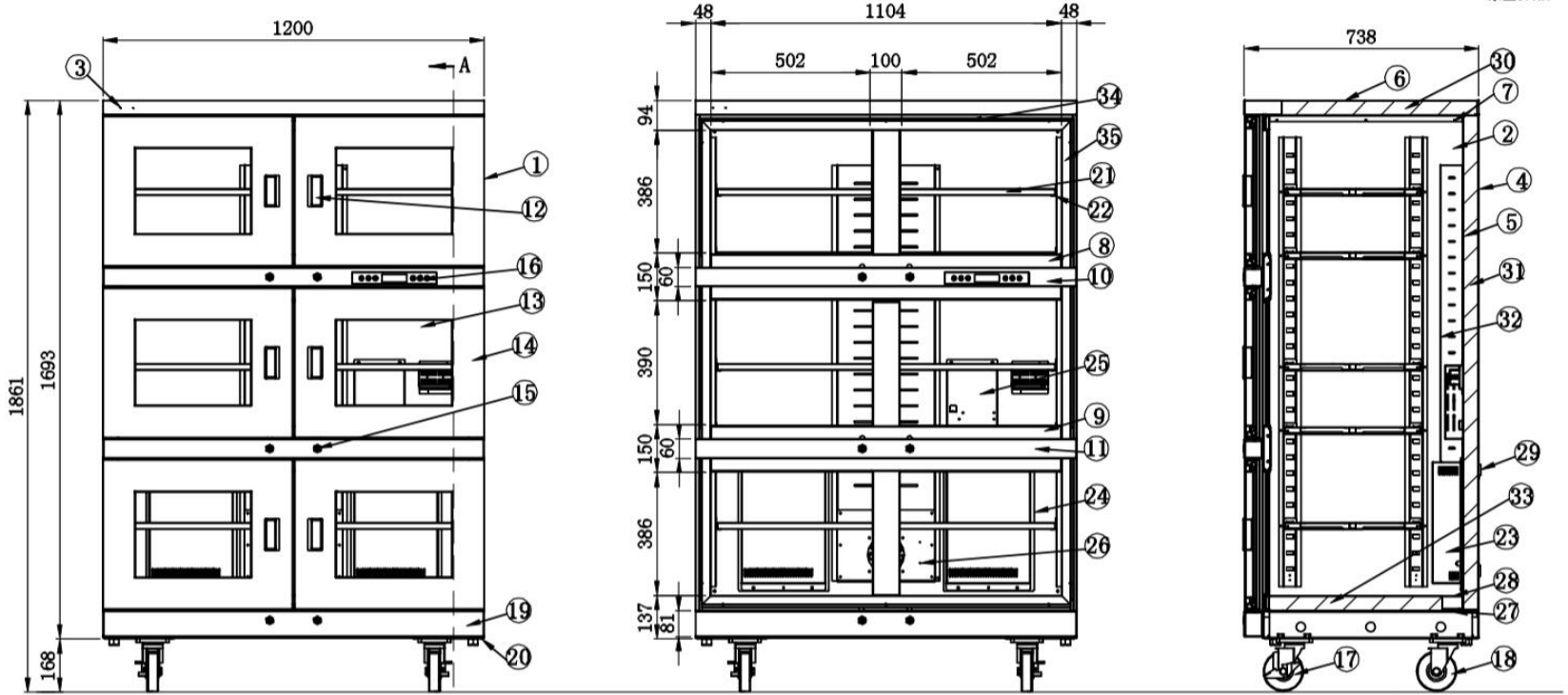




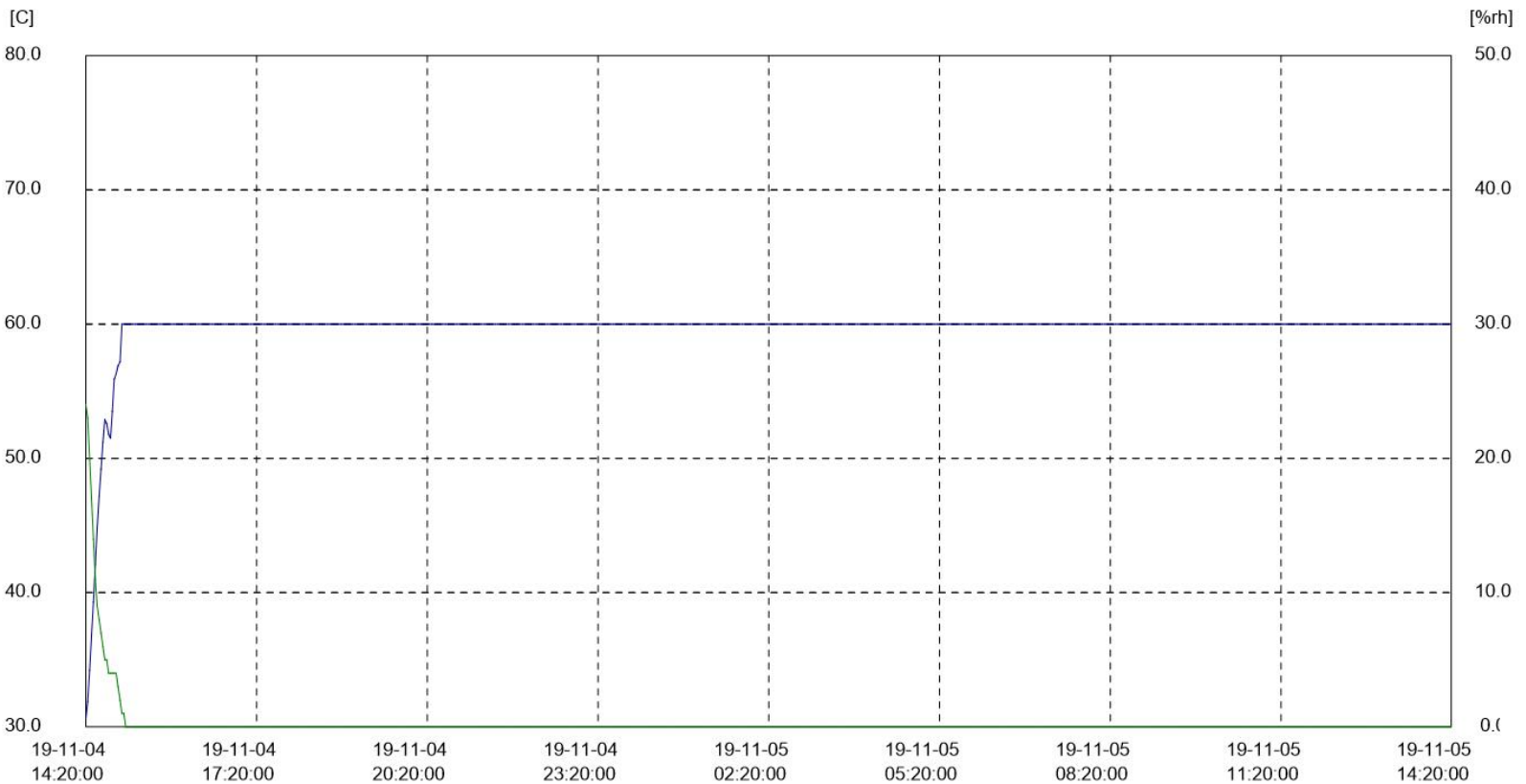
Model: MSD-1106-02A

Min. 1%RH, max. 60 °C, 1041L

Drawing for MSD-1106-02A



Unloaded test



Set at 60°C+1%RH



Model: MSD-1106-02A

Min. 1%RH, max. 60 °C, 1041L

Digital Control Panel



- Ultra-low humidity control
- Control constant medium temperature
- Humidity and temperature alarm (option)
- Set values on digital panel
- Digital panel lock/ unlock
- Humidity and temperature real-time display
- Door open alarm (option)
- N2 purging (option)

Available options



❖ Extra shelf

Greatly increase the usable space inside Super Dry



❖ SMD single rack (stainless steel)

Suitable for storage of components on tape and reel, can pull out on rail



❖ SMD double rack (stainless steel)

Suitable for storage of components on tape and reel, can pull out on rail



❖ Humidity/ Door open alarm buzzer

Alarm buzzer sounds when its internal humidity/ door open time exceeds set value



❖ Humidity alarm light

Alarm light flashes and sounds when its internal humidity exceeds set value



❖ Independent Nitrogen purge system (Model TN2-02)

Effective usage of N₂ combined with Super Dry, help to accelerate the recovery time and oxidation prevention. Set the buttons on N₂ purge system itself



❖ Nitrogen valve (Model: HN2-01)

Simple N₂ flow meter 0-25L/min adjustable



❖ Nitrogen auto purge system (Model AN2-03)

Effective usage of N₂ combined with Super Dry, help to accelerate the recovery time and oxidation prevention. Set on digital control panel



❖ Adjustable legs

Available for effective stabilization



❖ Wrist strap connection

Allows grounding while handling ESD sensitive materials



❖ Data logger with software (model Testo 174H)

Data logging humidity and temperature, can read and output data by software with a PC