

# Super Dry

World Leading Technology  
More Than 40 Years

New!

MSD

Medium Temperature / Low Humidity

New!

SUS

Made of all Stainless Steel  
Ultra Low Humidity

Silicon • Electronic equipment  
Semiconductor  
Electronic Components • Food  
Drug and Precision Machinery  
• Optical Instruments

**Revolution of  
Low Humidity  
Storage!!**

- 1 Room temp (25 °C)~ 50°C + ≤5%RH • MSD Series
- 2 Cabinets made of all stainless steel 2%RH • SUS Series
- 3 Ultra-low Humidity 1%RH • 01 Series
- 4 Ultra-low Humidity 2%RH • 02 Series
- 5 High cost performance Humidity 3%RH • 03 Series
- 6 Long Term Storage Humidity 20%RH • Auto Dry
- 7 Acrylic Nitrogen Cabinet



MSD-1206-01

**MSD Series**

Newly Developed

Temperature:  
Room Temperature(25°C)~50°C  
Humidity: **1%RH**

Chips Needed to be Baked  
in Cabinet  
Components that Can not be  
Baked at High Temperature  
Tape Goods



HSD-702-01

**01 Series**

6 models  
Humidity: **1%RH**

**Inner Humidity 1%**  
Continuous to Keep

(Unloaded at Environment  
Humidity of 50~60%)



SD-1104-02

**02 Series**

7 models  
Humidity: **2%RH**

**Inner Humidity 1%**  
Continuous to Keep  
(Unloaded at Environment  
Humidity of 50~60%)

**N2 Saving Dry Cabinet**



Electronic Dry Cabinet  
Combined with N2  
Saving Purging System  
Fast Dehumidification  
and Recovery

Available for all models

The World's Leading Automatic Dry Cabinet Supplier

**Totech**

Manufactured by  
TOYOLIVING CO.,LTD.



2016

## History of Totech

- **1974** The foundation of Toyo Living Co., Ltd. The development of dry unit started.
- **1976** Instead of using silica gel desiccant, the dry unit, which is installed with the new desiccant, has been firstly come into the Japanese market through agents in the field of physical and chemistry.
- **1982** The manufacturer of home electronic applicant, TOSHIBA bought our dry unit, and sold out 13,500 sets only within three months from June to August. (It was promoted on 30-second TV commercial once )
- **1983** With the installation of Shape Memory Alloys (SMA), the dry unit has been firstly come into the optical market in Japan.
- **1987** As the usage of dry cabinet (Auto Dry, with humidity setting 30~50%RH) shift from the optical market to the field of semiconductor, the humidity setting is verified to 3%RH, 2%RH, and 1%RH. Besides, the air clean dry cabinet with a HEPA filter is also developed at this time.
- **Beginning of 1990s** To meet the storage of semiconductor, the temperature baking dry cabinet is developed, for both dehumidifying and medium temperature baking. (Room Temperature 50 degrees)
- **Beginning of 21 century** Enter the market of Europe and America.
- **2006** Totech Global Co., Ltd. was established to take in charge of the overseas sales and service of Toyo Living products.
- **2008** Totech Shanghai Co., Ltd. was set up to further expand the global market of Totech dry cabinets.



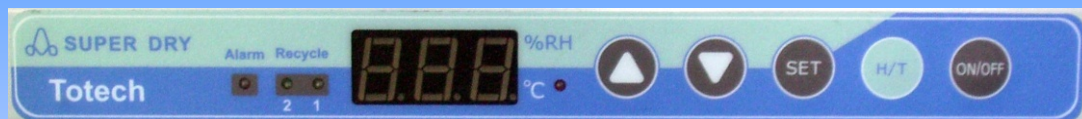
Office



Factory

## SUPER DRY FEATURES

### 1 Digital Control Panel Adjusting Humidity



Electronic  
Effective  
Energy-saving

### 2 Features of Super Dry Accord to or even Exceed IPC/JEDEC J-STD-033C

### 3 Perfectly ESD Safe- Fit for Storage of Semiconductor, Electronic Component, Accords to ESD-IEC61340-5-1

### 4 Warranty Period 2 Years

## Series & Features

### ★ MSD Series

Medium Temperature: Room temperature (25°C)~50°C  
Low Humidity: ≤5%RH

MSD Max.(50 °C) Forced convection of inner hot air  
Semiconductor, electronic components, powder material, tape material, etc.

### ★ SUS Series

Inner Humidity Keeps at 2% or 1%RH

Made of all stainless steel, with ultra low humidity, most suitable for clean rooms and labs.

### ★ 01 Series

Inner Humidity Keeps at 1%RH

Dry storage of IC, silicon wafers, aerospace related instruments and tools, optical components, etc  
Fast recovery after door open-and-close

### ★ 02 Series

Steady Low Humidity- Long Term Storage

Average door open-close 1~2 times a day keeps at 2%RH  
Save energy appr.50%

### ★ 03 Series

Low Humidity: <3%RH

High cost performance  
Reach <3%RH, fit for medium/long term storage of PCB and IC.

### ★ 20 Series

Medium Humidity: 20~50%RH

Low cost  
Reach 20%RH, fit for medium/long term storage.

### ★ Auto Dry

Inner Humidity: 20~50%RH

Inner Humidity Adjustable  
Capacity 1160L~121L

★ Suitable for Universities, Institutes, Labs, Food, etc

### ★ Acrylic N<sub>2</sub> Cabinet

Dry Unit Optional, <3% or 20~50%RH

Transparent Nitrogen Cabinet  
Easy for observation

## MSD Series

**Fast Dehumidifying**

Temperature: Room temperature (25°C)~50°C Humidity: ≤5%RH



**Made in Japan**

**SDM-1206-01**



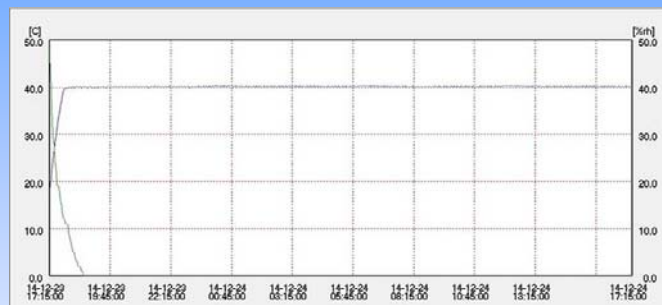
**MSD-1202-02**



**MSD-701-02**



**MSD-301-02**



- ◆ Improved heat insulation(MSD-1102-02 Max.50°C)  
Operate under forced inversion of inner hot air and low humidity (≤5%RH), baking dry.
- ◆ Baking for semiconductor, PCB, IC and LED, accelerate drying, Improve production efficiency.

### Advantages to Items Stored

1. Mild baking: Cause no flaws to SMDs during dehumidification.
2. No need of pre-baking: To prevent the defective products
3. Moisture prevention: To prevent moisture absorption in one hour after taken from the cabinet.

**Stainless steel  
body available**

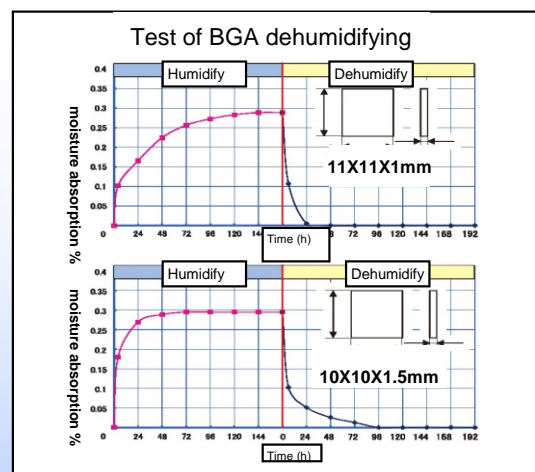
※ This product has the function of heating and dehumidifying, has no function of refrigerating

- 1 Avoid high temperature(>100°C) baking, easy for operation
- 2 Control and show inner humidity on the digital panel
- 3 Accord to IC package management standard IPC/JEDEC J-STD-033C
- 4 Warranty period 2 years

### Heating to Max 50°C

Hot air blows from bottom to the top, making the temperature even inside cabinet. Precise sensor installed, digital control panel, operation easily. Items cannot be stored on the bottom (air outlet) of cabinet to prevent hot air to be blocked.

### Dehumidifying of BGA



**[ Note ]** ※Specifications are subject to change.

| Model                          | SDM-1206-01               | MSD-1102-02               | MSD-701-02                | MSD-301-02                |
|--------------------------------|---------------------------|---------------------------|---------------------------|---------------------------|
| External Dimension W-D-H (mm)  | 1240x810x1860             | 1316x702x1897             | 660x687x1897              | 660x687x1172              |
| Internal Dimension W-D-H (mm)) | 1198x658x1569             | 1217x462x1447             | 560x478x1447              | 560x478x722               |
| Capacity (L)                   | 1190                      | 885                       | 450                       | 260                       |
| Weight (kg)                    | 235                       | 225                       | 145                       | 126                       |
| Power Consumption              | Mean 370W/h               | Max. 1800W/h              | Max. 1500W/h              | Max. 1500W/h              |
| Rated Voltage                  | AC100V, 50/60Hz           | AC90~265V, 50/60Hz        | AC90~265V, 50/60Hz        | AC90~265V, 50/60Hz        |
| Body Material                  | Steel with ESD safe paint | Steel with ESD safe paint | Steel with ESD safe paint | Steel with ESD safe paint |
| Stainless Steel Shelves        | 5pcs                      | 5pcs                      | 5pcs                      | 2pcs                      |



**TOTECH SUPER DRY****NEW!****Stainless Steel Cabinet****2%RH (1%RH available)****Made of Stainless Steel**

Cabinet body made of 1.5 mm thick stainless steel SUS304, most suitable for ultra low humidity storage in clean rooms

**ESD Safe**

5 methods for 100% perfect EPA!

- ① Stainless steel body
- ② Stainless steel shelves
- ③ Conductive windows
- ④ 1MΩ earth resistance wire
- ⑤ Earth point for wrist strap & Wrist strap

**SUPER DRY**

Can enable your best achievement in production and development, with highest security and safety.

**Digital Panel**

Simple and easy to set humidity  
Temperature can also be indicated

**Humidity Sensor**

High end, high quality sensor to transmit Data to digital panel (Calibratable)

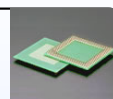
**Engine Developed by Toyo Living****Powerful Dry Unit****High Reliability and Stability**

humidity, quick recovery system works.

Only Super Dry by original TOTECH can supply fully satisfied ESD FREE cabinets, 100% adjustment to IEC-61340-5-1.

**Application example**

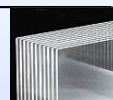
1) IC packages



2) Silicon Wafer



3) Liquid Crystal Glass (LCG) Board



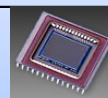
4) PCBs



5) Ceramics



6) Optical Fiber. CCD etc

**SUS-1106-02****SUS-702-02****SUS-480-02**

| Model                   | SUS-1106-02  | SUS-702-02   | SUS-480-02   |
|-------------------------|--|--------------|--------------|
| External WxHxD (mm)     | 1200x1840x670                                      | 620x1840x780 | 600x1225x760 |
| Internal WxHxD (mm)     | 1190x1560x620                                      | 610x1560x730 | 589x1035x620 |
| Capacity (L)            | 1160   | 680          | 388          |
| Rated Voltage           | AC220V, 50/60Hz (Other voltage is optional)        |              |              |
| Material                | Stainless steel body and shelves, conductive doors |              |              |
| Stainless Steel Shelves | 5 pcs  | 5 pcs        | 3 pcs        |

**01 Series 1%RH (Digital Control Panel: 1%RH)**

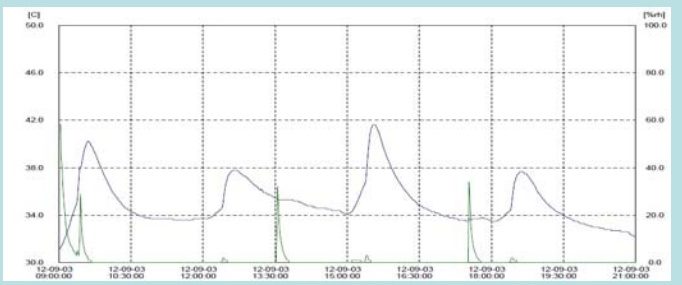
Dry Unit **×2**



**Superior Recovery after Frequent Door Openings**

01 series are equipped with 2 powerful patented dry units to reach ultra-low humidity min. 1%RH which meets IPC/JEDEC J-STD-033C demands, and provide the most effective solution to

1. Micro-cracks in Integrated Circuits like QFP and BGA
2. Delaminations in Printed Circuit Boards and Rework Devices
3. Defects Caused by Heating in Lead-free SMD Devices



**Door open-and-close test**



HSD-1106-01



HSD-1104-01



HSD-702-01



HSD-302-01

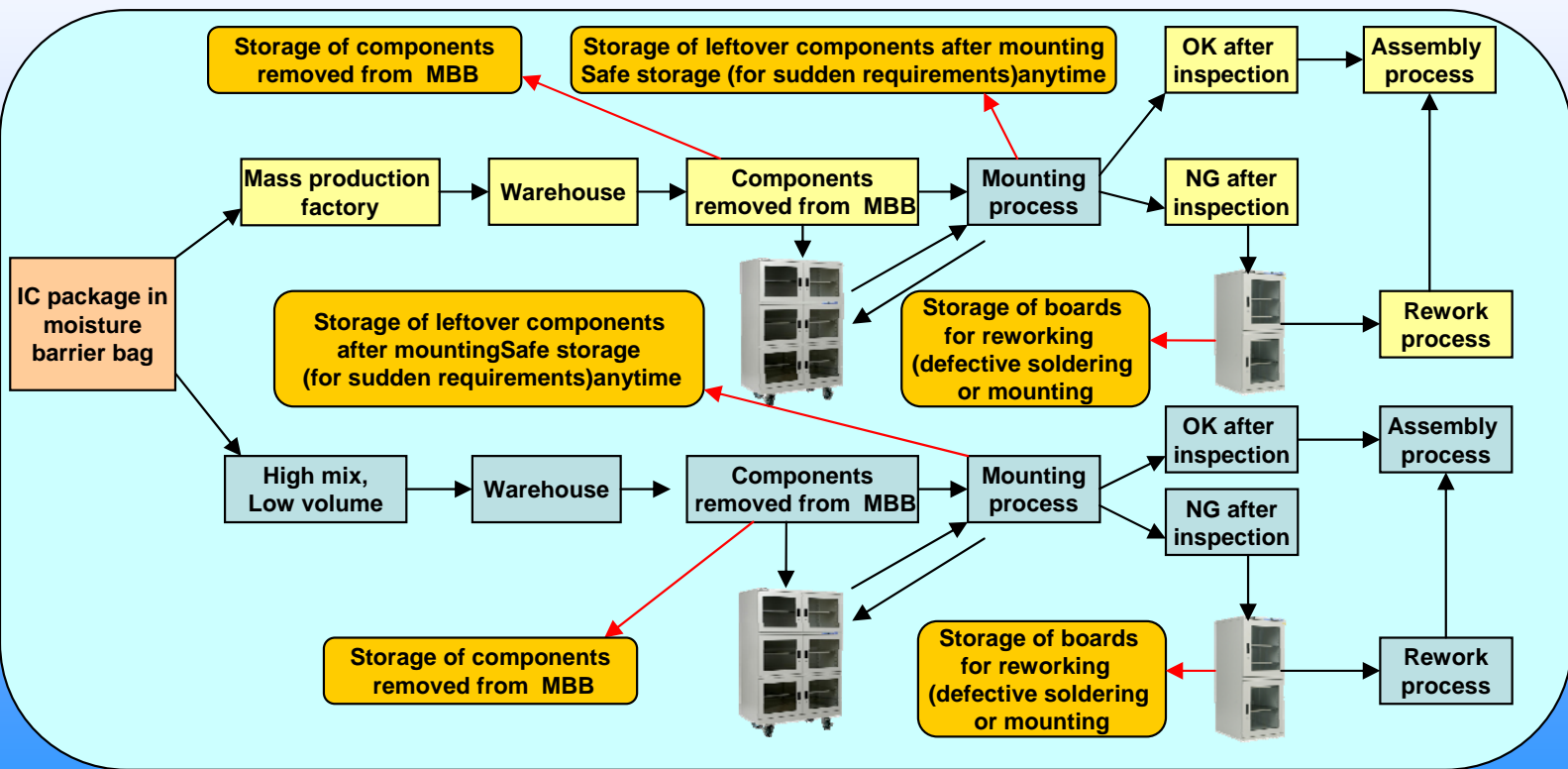


HSD-502-01



HSD-252-01

| Model                   | HSD-1106-01  | HSD-1104-01 | HSD-702-01   | HSD-302-01         | HSD-502-01  | HSD-252-01  |
|-------------------------|--|-------------|--------------|--------------------|-------------|-------------|
| External WxHxD (mm)     | 1200x1840x670  |             | 620x1840x780 | 500x1230x640       | 880x900x740 | 880x900x380 |
| Internal WxHxD (mm)     | 1190x1560x620  |             | 610x1560x730 | 490x1160x590       | 870x830x690 | 870x830x330 |
| Capacity (L)            | 1160   |             | 680          | 340                | 510         | 252         |
| Weight (kg)             | 167  | 162         | 117          | 67                 | 67          | 46          |
| Mean Power Consumption  | 56W/h=40.4kW/month                                   |             |              | 56W/h=40.4kW/month |             |             |
| Rated Voltage           | AC220V, 50/60Hz (Other voltage is optional)          |             |              |                    |             |             |
| Material                | Steel Body with ESD safe paint, and Conductive Doors |             |              |                    |             |             |
| Stainless Steel Shelves | 5 pcs  |             |              | 7 pcs              | 3 pcs       |             |



**02 Series (Digital Control Panel: 2%RH )**

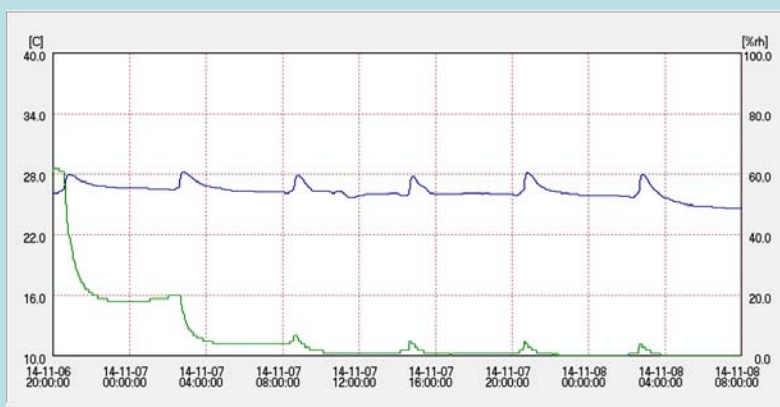
**Dry Unit ×1**



**Medium to Long Term Constant Ultra-Low Humidity Storage**

02 series are equipped with 1 patented dry unit to constantly maintain the ultra-low humidity to min. 2%RH, to meet IPC/JEDEC J-STD-033C demands, and are ideal for the moisture proof and anti-oxidation storage of the following items.

- 1.Storage of all kinds of Interacted Circuits and Silicon Wafers etc
2. Storage of PDP Inspection Equipments and Liquid Crystal Cleaning Equipments etc
- 3.Storage of Aerospace related instruments and Tools
- 4.Storage of Optical Equipments and Digital Media
- 5.Storage of Chemicals, Medicine, Cultural Assets, etc



**02 series unloaded test**



SD-1106-02



SD-1104-02



SD-702-02



SD-302-02



SD-502-02



SD-252-02

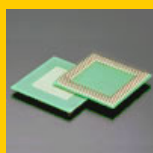


SD-151-02

| Model               | SD-1106-02   | SD-1104-02 | SD-702-02    | SD-302-02      | SD-502-02            | SD-252-02   | SD-151-02   |
|---------------------|--|------------|--------------|----------------|----------------------|-------------|-------------|
| External WxHxD (mm) | 1200x1840x670  |            | 620x1840x780 | 500x1230x640   | 880x900x740          | 880x900x380 | 500x630x580 |
| Internal WxHxD (mm) | 1190x1560x620  |            | 610x1560x730 | 490x1160x590   | 870x830x690          | 870x830x330 | 490x560x530 |
| Capacity (L)        | 1160   |            | 680          | 340            | 510                  | 252         | 145         |
| Weight (kg)         | 160  | 155        | 110          | 60             | 60                   | 39          | 29          |
| Power Consumption   | 28W/h  |            |              | 28W/h          |                      |             | 21W/h       |
| Rated Voltage       | AC220V, 50/60Hz (Other voltage is optional)            |            |              |                |                      |             |             |
| Material            | Steel body with ESD safe painting and conductive doors |            |              |                |                      |             |             |
| Shelves             | Stainless steel 5pcs                                   |            |              | Stainless 7pcs | Stainless steel 3pcs |             |             |

**Applications in Production Process**

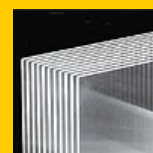
1) IC packages



2) Silicon Wafer



3) Liquid Crystal Glass (LCG) Board



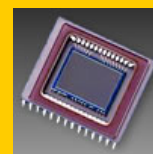
4) PCBs



5) Ceramics



6) Optical Fiber. CCD etc



## Superior Features of 01 and 02 Series

Engine Developed by Toyo Living

### U-2001F Type Dry Unit

#### High Reliability and Stability

Till today more than 55,000 Units have been supplied and Used in the world, especially in Japan where strict regulations Exist. Low humidity, Quick recovery system works.



**ESD Safe**

6 methods for 100% perfect EPA!

- ① Conductive coating
- ② Conductive windows
- ③ 1MΩ earth resistance wire
- ④ High end stainless steel shelves
- ⑤ Earth point for wrist strap
- ⑥ Wrist strap

## SUPER DRY



Can enable your best achievement in production and development, with highest security and safety.

### Digital Panel

Simple and easy to set humidity  
Temperature can also be indicated



### Humidity Sensor

High end, high quality sensor to transmit Data to digital panel (Calibratable)

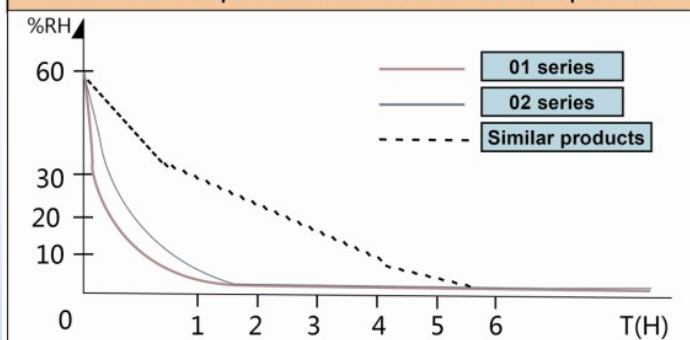
Only Super Dry by original TOTECH can supply fully Satisfied ESD FREE cabinets, 100% adjustment to IEC-61340-5-1.

## Fast dehumidification

### <Suitable for production process>

When a door is opened and closed, the fan inside the dry unit operates automatically about 20mins <automatic operation>. This provides faster dehumidification than the previous models and similar products. This new and original feature is indispensable for solving problems of moisture proofing and dehumidification between production line where doors are frequently opened and shut, and in reducing the humidity under highly humid external environment conditions.

Performance comparison: 01 and 02 series vs. similar products

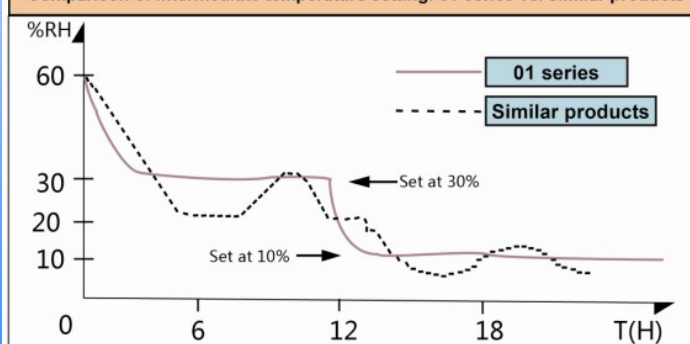


## Keeping constant humidity

At one time it was said that, due to the dehumidifier problems, maintaining constant humidity was not just very difficult but impossible, with the 01 and 02 series, improvements in both the software and hardware aspects have made it possible to cope with storage of special devices which you'd better store in the 20~30%RH range.

outside conditions 20°C, 50%RH

Comparison of intermediate temperature setting: 01 series vs. similar products





**03 Series ( Humidity Control: <3%RH )**



**ESD Safe**

**Super Dry Newly Designed**

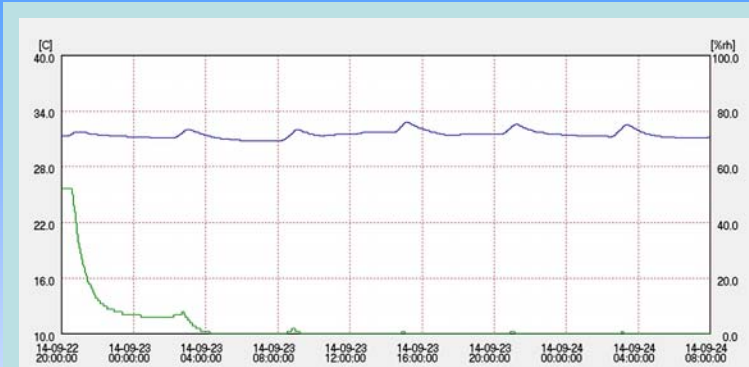
Constantly Dehumidifying, reaching min. <3%RH

LCD Digital Hygrometer

Cost Low

Meet the requirement of

**IPC/JEDEC J-STD-033C**



CSD-1106-03



CSD-1104-03



CSD-702-03



CSD-302-03



CSD-502-03



CSD-252-03



CSD-151-03

| Model               | CSD-1106-03  | CSD-1104-03 | CSD-702-03 | CSD-302-03 | CSD-502-03 | CSD-252-03 | CSD-151-03 |
|---------------------|--|-------------|------------|------------|------------|------------|------------|
| External WxHxD (cm) | 120x184x67   | 120x184x67  | 62x184x78  | 50x123x64  | 88x90x74   | 88x90x38   | 50x63x58   |
| Internal WxHxD (cm) | 119x156x62   | 119x156x62  | 61x156x73  | 49x116x59  | 87x83x69   | 87x83x33   | 49x56x53   |
| Capacity (L)        | 1160   | 1160        | 680        | 340        | 510        | 252        | 145        |
| Weight (kg)         | 160  | 155         | 110        | 60         | 60         | 39         | 29         |
| Voltage             | AC220V, 50/60Hz (Other voltage is available)       |             |            |            |            |            |            |
| Material            | ESD safe steel body& shelves, and conductive doors |             |            |            |            |            |            |
| Shelves             | 5pcs   |             |            | 7pcs       |            | 3pcs       |            |

**Feeder Series ESD safe**

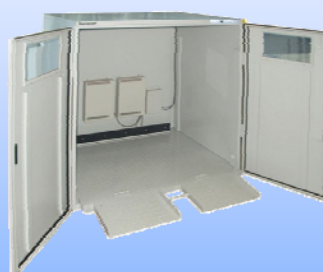
**(Ask for customized dimensions)**

**Feeder Series (ESD Safe)**

Perfect Ultra-Low Humidity Storage for Tape Feeder at 1%RH

Deep Design Handles Tape Feeders

Tape feeder can be stored directly inside dry cabinet



Most suitable for trolleys with feeder to put inside cabinet directly, cabinet loading capacity 200kgs.

Humidity control 1%RH by digital control panel.  
Two trolleys can be stored inside.

|                    |                      |
|--------------------|----------------------|
| External Dimension | W1200×H1840×D960(mm) |
| Internal Dimension | W1190×H1506×D910(mm) |
| Capacity           | 1708(L)              |
| Weight             | 197(kg)              |
| Power Consumption  | 56W/h                |
| Shelves            | 5 Stainless Shelves  |
| Material           | Steel body           |

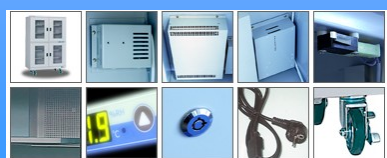


SDF-1104-01



SDF-1402-01

|                    |                                |
|--------------------|--------------------------------|
| External Dimension | W1300xH1290xD1090(mm)          |
| Internal Dimension | W1250xH1205xD952 (mm)          |
| Capacity           | 1400L                          |
| Weight             | 200(Kg)                        |
| Power Consumption  | 56W/h                          |
| Shelves            | None                           |
| Material           | Steel body with ESD safe paint |



## 20 Series

(Humidity Control: 20~50%RH)

Long Term Storage

### Super Dry Newly Designed

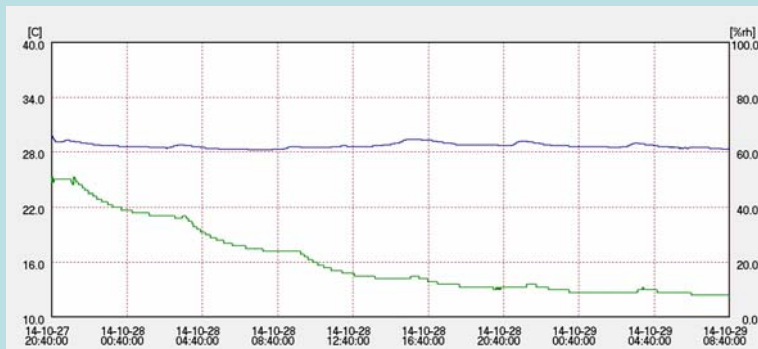
Best choice for factories, labs and universities

Constantly Dehumidifying, 20%~50%RH

LCD Digital Hygrometer

Cost Low

ESD Safe Function Optional



CSD-1106-20



CSD-1104-20



CSD-702-20



CSD-302-20



CSD-502-20



CSD-252-20



CSD-151-20

| Model              | CSD-1106-20                                  | CSD-1104-20 | CSD-702-20 | CSD-302-20 | CSD-502-20 | CSD-252-20 | CSD-151-20 |
|--------------------|--|-------------|------------|------------|------------|------------|------------|
| External WxHxD(cm) | 120x184x67                                   | 120x184x67  | 62x184x78  | 50x123x64  | 88x90x74   | 88x90x38   | 50x63x58   |
| Internal WxHxD(cm) | 119x156x62                                   | 119x156x62  | 61x156x73  | 49x116x59  | 87x83x69   | 87x83x33   | 49x56x53   |
| Capacity(L)        | 1160   | 1160        | 680        | 340        | 510        | 252        | 145        |
| Weight(kg)         | 160  | 155         | 110        | 60         | 60         | 39         | 29         |
| Voltage            | AC220V, 50/60Hz (Other voltage is available) |             |            |            |            |            |            |
| Material           | Steel body and shelves                       |             |            |            |            |            |            |
| Shelves            | 5pcs   |             |            | 7pcs       | 3pcs       |            |            |

## Pass Box Design (Ask for details)

Totech Super Dry is available to be made to pass box design.



SDP-1208-01

## SDC Series ESD Safe

HEPA Clean cabinet  
With 6 doors is available



SDC-1204-01

### HEPA Clean Cabinet (ESD Safe)

Equipped with HEPA filter and dry unit, controlling cleanliness and humidity simultaneously. Air cleanliness class 100, humidity 1%RH.

|                    |                      |
|--------------------|----------------------|
| External Dimension | W120 xH184 xD80 (mm) |
| Internal Dimension | W119xH156xD62 (mm)   |
| Capacity           | 1100L                |
| Weight             | 193(Kg)              |
| Power Consumption  | 56W/h                |
| Shelves            | 5 Stainless Shelves  |
| Material           | Steel Body           |



# Most Economic Choice for Long Term Storage



ASD-1006



ED-508



ED-268



ED-138

| Model               | ASD-1006                                       | ED-508   | ED-268   | ED-138   |
|---------------------|--|----------|----------|----------|
| External (WxHxD)cm  | 120x184x69                                     | 88x90x76 | 88x90x40 | 44x90x40 |
| Internal (WxHxD) cm | 119x156x62                                     | 87x84x70 | 87x84x34 | 42x84x29 |
| Capacity (L)        | 1160   | 510      | 252      | 121      |
| Weight (kg)         | 155  | 58       | 33       | 21       |
| Power Consumption   | 12.6W/h  | 6.3W/h   |          | 1.9W/h   |
| Voltage             | AC220V, 50/60Hz, ( Other voltage is available) |          |          |          |
| Material            | Steel body with gray painting                  |          |          |          |
| Steel Shelves       | 5 pcs  | 3 pcs    |          |          |

Totech Auto Dry flexible setting 20%~50%RH, fit for long term storage.

1. Storage of micro-films and positive/negative films
2. Storage of antiques and ancient documents
3. Storage of electronic devices, PCB and IC packages before removing from moisture barrier bag
4. Storage of powdered medicines and water solution
5. Storage of micro-lens and microscope lens etc

Auto Dry Unloaded Testing



## Storage of Metal Objects and Tools

**Recommended Humidity Level: Lower than 40%**



Rust and error on the internal precision instrument can be prevented by storing commercial measuring instruments and other precision equipment, special tools, weapons, home equipment with metal parts in a low humidity.

## Powders

**Recommended Humidity Level: Lower than 40%**



Any powder material for scientific, industrial, medical or household use can be protected from moisture absorption and chemical reaction by storing in a low humidity environment.

## Stamps, Photos, Albums

**Recommended Humidity Level: 30%~50%RH**

Prevent discoloration and yellowing.



Humidity is one of the main causes of yellowing and discoloration of stamps and photos. They should be stored in a humidity level of 30~50%, not too high or too low.

## Seeds

**Recommended Humidity Level: 30~ 50%**

**Desirable Humidity Level: Lower than 10%**



There is a strong relationship between seed germination with the moisture level of seed storage environment. A low humidity environment and prevention against water absorption will lead to high germination and growth rate.

## Camera Lenses

**Recommended Humidity Level: 50%**



Mold can be prevented on camera lenses, microscopes, binoculars and photography equipment by storing in an Auto Dry cabinet.

## Antiques, Arts

**Recommended Humidity Level: 30%~55%RH**



The hot summer and dry winter environment must be overcome to maintain the value of the items.



**Acrylic Nitrogen Cabinet****Transparent Acrylic Cabinet**

N2 set pre-installed, dry unit 3% or 20%

**Fast dehumidification**

Developed out of a robust acrylic material, the Super Dry Acrylic Series is engineered to achieve 3% RH control. Equipped with an N<sub>2</sub>-Set, the series can be used to store any stock commonly used in laboratories or electronics in a nitrogen atmosphere. Transparent acrylic cabinet serves clear observation of items stored inside, such as powder, chemicals, antiques, and so on.

**ESDA Series ESD safe, 3%RH****Digital panel optional**

ESDA-800S



ESDA-400S



ESDA-200S



Precise Hygrometer

Aluminium frame and  
Acrylic bodyStainless steel shelves  
ESD safe

Light, easy to remove

Transparent design,  
Easy for observationN2 manual system  
pre-installed

| Model                   | ESDA-800S                 | ESDA-400S                | ESDA-200S                |
|-------------------------|---------------------------|--------------------------|--------------------------|
| External WxHxD(mm)      | 1152x1692x517             | 574x1692x606             | 574x768x549              |
| Internal WxHxD(mm)      | 1140x1470x487             | 561x1470x487             | 559x737x487              |
| Capacity                | 820 L                     | 400 L                    | 220 L                    |
| Weight                  | 85 kg                     | 53 kg                    | 20 kg                    |
| Stainless Steel Shelves | 10pcs, loading 20kg/shelf | 5pcs, loading 20kg/shelf | 2pcs, loading 20kg/shelf |

**SDA Series****20%RH**

SDA-800S



SDA-400S



SDA-200S

| Model                   | SDA-800S      | SDA-400S     | SDA-200S    |
|-------------------------|---------------|--------------|-------------|
| External WxHxD(mm)      | 1152x1692x517 | 574x1692x606 | 574x768x549 |
| Internal WxHxD(mm)      | 1140x1470x487 | 561x1470x487 | 559x737x487 |
| Capacity                | 820 L         | 400 L        | 220 L       |
| Weight                  | 85 kg         | 53 kg        | 20 kg       |
| Stainless Steel Shelves | 10pcs         | 5pcs         | 2pcs        |

**Camera cabinet 25~55%RH**

AD-50



ED-106



Super Case



- ❖ Set humidity value precisely, display humidity and temperature value
- ❖ Set the humidity and door open alarm
- ❖ Set the nitrogen purging time
- ❖ Lock the panel to avoid unintended changes of setting
- ❖ Sensor calibration



❖ Extra shelf

Greatly increase the usable space inside Super Dry



❖ SMD single rack (stainless steel)

Suitable for storage of components on tape and reel, can pull out on rail



❖ SMD double rack (stainless steel)

Suitable for storage of components on tape and reel, can pull out on rail



❖ Humidity/ Door open alarm buzzer

Alarm buzzer sounds when its internal humidity/door open time exceeds set value



❖ Humidity alarm light

Alarm light flashes and sounds when its internal humidity exceeds set value



❖ Independent Nitrogen purge system (Model TN2-02)

Effective usage of  $N_2$  combined with Super Dry, help to accelerate the recovery time and oxidation prevention. Set the buttons on  $N_2$  purge system itself



❖ Nitrogen valve (Model: HN2-01)

Simple  $N_2$  flow meter 0-25L/min adjustable



❖ Nitrogen auto purge system (Model AN2-03)

Effective usage of  $N_2$  combined with Super Dry, help to accelerate the recovery time and oxidation prevention. Set on digital control panel



❖ Adjustable legs

Available for effective stabilization



❖ Wrist strap connection

Allows grounding while handling ESD sensitive materials



❖ Data logger with software (model MR6662)

Data logging humidity and temperature, can read and output data by software with a PC



❖ Network system for humidity and temperature (including module and software)

Far distance humidity and temperature monitoring



❖ Castors(4 pcs)

To move the cabinet on floor easily

\*Model No. and dimensions are subject to change.

